

# **PRECISION POWER CENTER**

## **Emerson / Liebert 300 kVA PDU**

### **QTY.(22) Model PPA300C425, Capacity 300kVA**

Module Input: 480 VAC, 60 HZ, Full Load Amps

Module Output : 208 V VAC, 60 HZ, 832 Full Load Amps

### **SYSTEM TYPE**

- Dual 600AF/500AT Main Input Circuit Breakers, SquareD “D” Frame
- Standard System with Transformer, 4 Wire Input (3 Phase 3 Wire plus Ground
- K13, 115 degree C rise, <5.2% Impedance, Inrush <4.2X
- Cabinet painted Liebert Standard/IBM Off-White

### **OUTPUT DISTRIBUTION**

- 1200A “P” Frame Secondary Main Circuit Breaker with 2A2B aux contacts
- One 1200A I-Line Panelboard
- Four (4) 400A SqD “LA” I-Line Breakers

### **MONITORING**

- PMP Monitoring Panel
- OCWebCard – SNMP/Modbus RTU-485 Protocol

### **OPTIONAL EQUIPMENT**

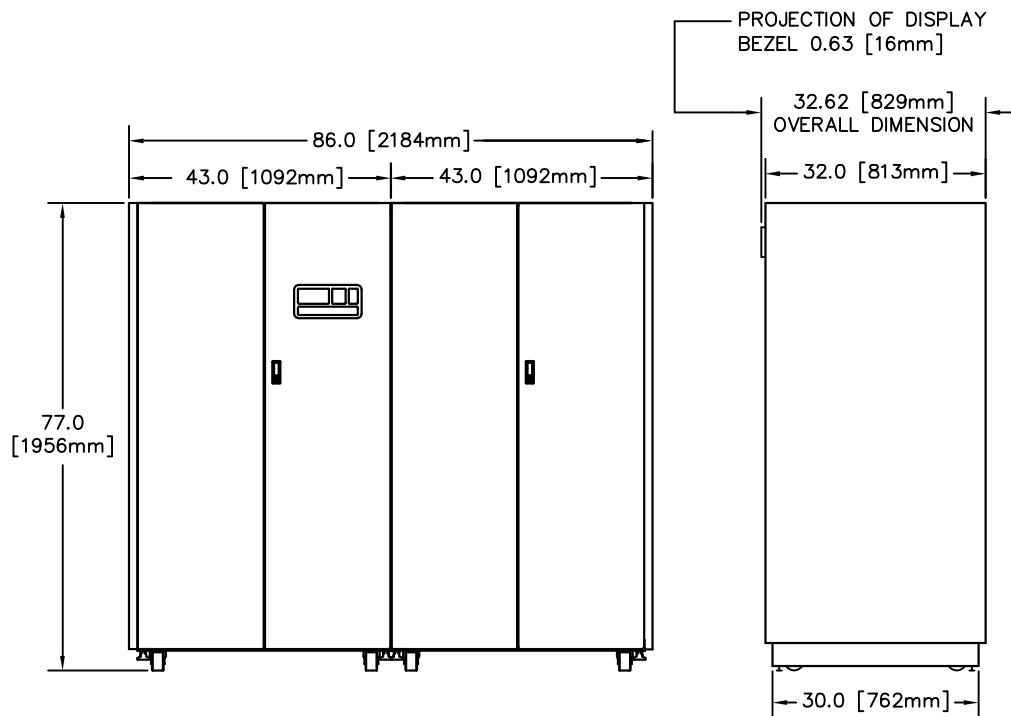
- 36”FFH Seismically Rated Floorstand

kVA	INPUT VOLTAGE	FULL LOAD AMPS	MIB TRIP AMPS	SUGGESTED FEEDER WIRE SIZE
300	380	469	600	(2) 350 kcmil
	400	446	600	(2) 350 kcmil
	415	430	600	(2) 350 kcmil
	480	372	500	(2) 250 kcmil
	600	297	400	(2) #3/0 AWG

— — FIELD SUPPLIED  
WIRING BY OTHERS

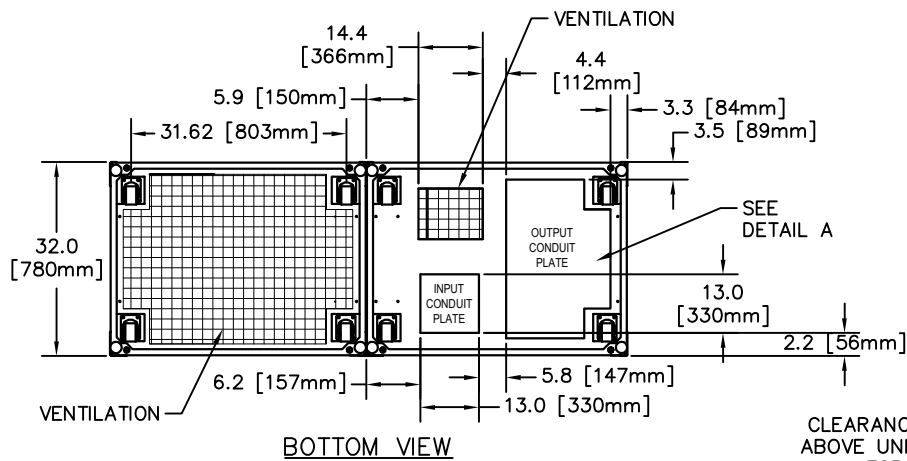
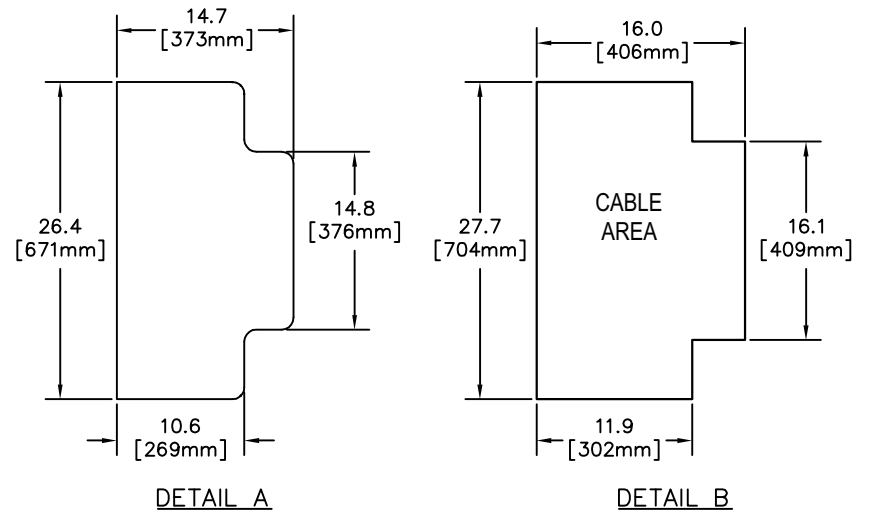


- |           |           |  |          |      |        |   |   |
|-----------|-----------|--|----------|------|--------|---|---|
| DRAWN BY  | SHEET NO. | <p>ONE-LINE DIAGRAM<br/>300KVA<br/>LIEBERT PPC</p> |          |      |        |   |  |
| CHK BY    | ECN NO.   |  |          |      |        |   |   |
| REF. DWG. | ORDER NO. |  | DWG. NO. | DATE | REV. # | 1050 DEARBORN DRIVE<br>P.O. BOX 29186<br>COLUMBUS, OHIO 43229 |   |
|           |           | FILE NAME:   |          |      |        |   |   |

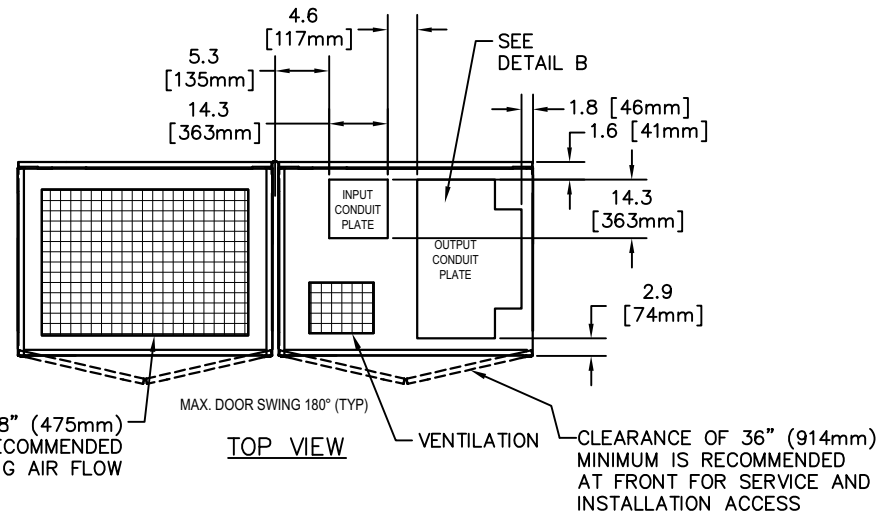


# NOTES:

1. ALL DIMENSIONS ARE IN INCHES AND (MILLIMETERS).
2. APPROXIMATE HEAT OUTPUT: 18,085 BTU/HR (5.29 kW)
3. APPROXIMATE WEIGHT: 3,150 LBS. ( 1429 kg)
4. UNIT BOTTOM IS STRUCTURALLY ADEQUATE FOR FORKLIFT HANDLING.
5. KEEP CABINETS WITHIN 15 DEG. OF VERTICAL WHILE HANDLING.



CLEARANCE OF 18" (475mm) ABOVE UNIT IS RECOMMENDED FOR COOLING AIR FLOW

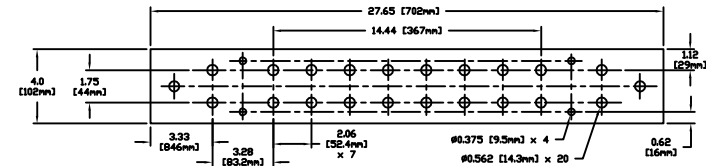


CLEARANCE OF 36" (914mm) MINIMUM IS RECOMMENDED AT FRONT FOR SERVICE AND INSTALLATION ACCESS

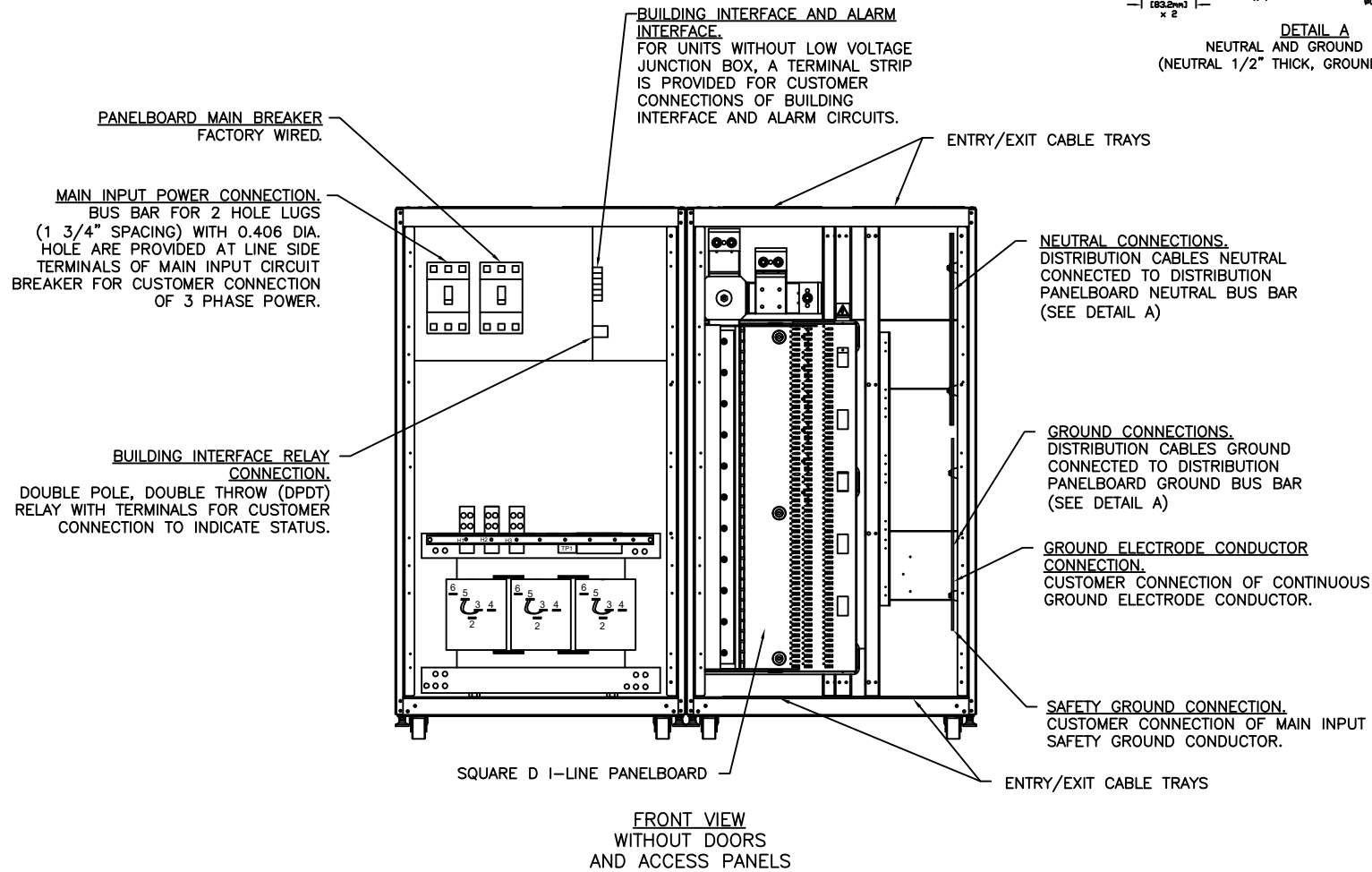
DRAWN BY	SHEET NO.	OUTLINE DRAWING 300KVA PRECISION POWER CENTER	<div> <div>DWG. NO.</div> <div>DATE</div> <div>REV. #</div> <div>1050 DEARBORN DRIVE P.O. BOX 29186 COLUMBUS, OHIO 43229</div> </div>			
CHK BY	ECN NO.					
REF. DWG.	ORDER NO.					



FILE NAME:



DETAIL A  
NEUTRAL AND GROUND BUSBAR  
(NEUTRAL 1/2" THICK, GROUND 1/4" THICK)




DRAWN BY	SHEET NO.	ELECTRICAL FIELD CONNECTIONS 300KVA LIEBERT PPC	<div><div></div><div>EMERSON. Network Power</div></div>			
CHK BY	ECN NO.					
REF. DWG.	ORDER NO.					
		DWG. NO.	DATE	REV. #	1050 DEARBORN DRIVE P.O. BOX 29186 COLUMBUS, OHIO 43229	

FILE NAME:

UNIT IDENTIFICATION

<b>DISPLAY</b> <b>OUTPUT VOLTAGE</b> X - Y = 208 Y - Z = 208 Z - X = 208 X - N = 120 Y - N = 120 Z - N = 120	<b>SCAN</b> <b>HOLD SEQUENCE</b>	<b>1</b>	<b>EMERGENCY POWER OFF</b> <b>ALARM PRESET SILENCE</b>
---	-------------------------------------	----------	---



# Liebert

DRAWN BY	SHEET NO.
CHK BY	ECN NO.
REF. DWG.	QUOTE NO.

POWER MONITORING PANEL


DWG. NO.	 <b>Liebert</b> P.O. BOX 29186 COLUMBUS, OHIO 43229
REV. NO.	
DATE	



LIEBERT 300-800kVA PPC CIRCUIT BREAKER SCHEDULE							
MAIN INPUT CIRCUIT BREAKER							
KVA	VOLTAGE IN	VENDOR	TYPE	FRAME AMPS	TRIPS AMPS	MODEL NUMBER	INTERRUPTING RATING AIC
300	380V	SQUARE D	FIX MTD	600A	600A	DJF36600E20SO	65kA
	400V	SQUARE D	FIX MTD	600A	600A	DJF36600E20SO	65kA
	415V	SQUARE D	FIX MTD	600A	600A	DJF36600E20SO	65kA
	480V	SQUARE D	FIX MTD	600A	500A	DJF36600E20SO	65kA
	600V	SQUARE D	FIX MTD	600A	400A	DJF36400E20SO	25kA
430	480V	SQUARE D	FIX MTD	800A	700A	PJF36080U31BSK	65kA
	600V	SQUARE D	FIX MTD	600A	600A	DJF36600E20SO	25kA
800	480V	SQUARE D	FIX MTD	1200A	1200A	PJF36120U31ASK	65kA
	600V	SQUARE D	FIX MTD	1200A	1000A	PJF36120U31ASK	25kA

MAIN PANELBOARD CIRCUIT BREAKER							
KVA	VENDOR	TYPE	FRAME AMPS	TRIPS AMPS	MODEL NUMBER	INTERUPPTING RATING AIC	
						208 - 240V	400 - 480V
300	SQUARE D	FIX MTD	1200A	832A	PGF36120CU31AYE	65kA	35kA
430	SQUARE D	FIX MTD	1200A	1200A	PGF36120CU31AYE	65kA	35kA
800	SQUARE D	FIX MTD	1600A	1400A	RGF36160U31B 1600A	65kA	35kA

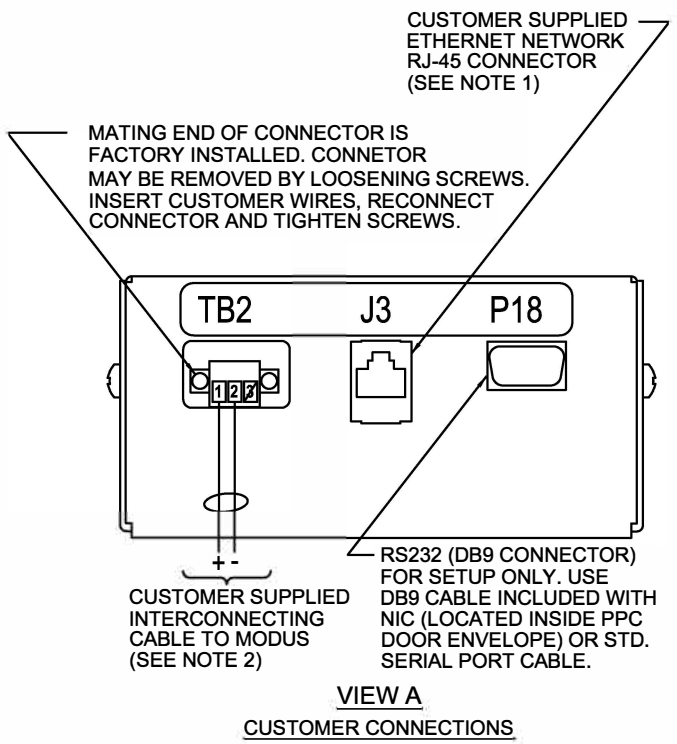
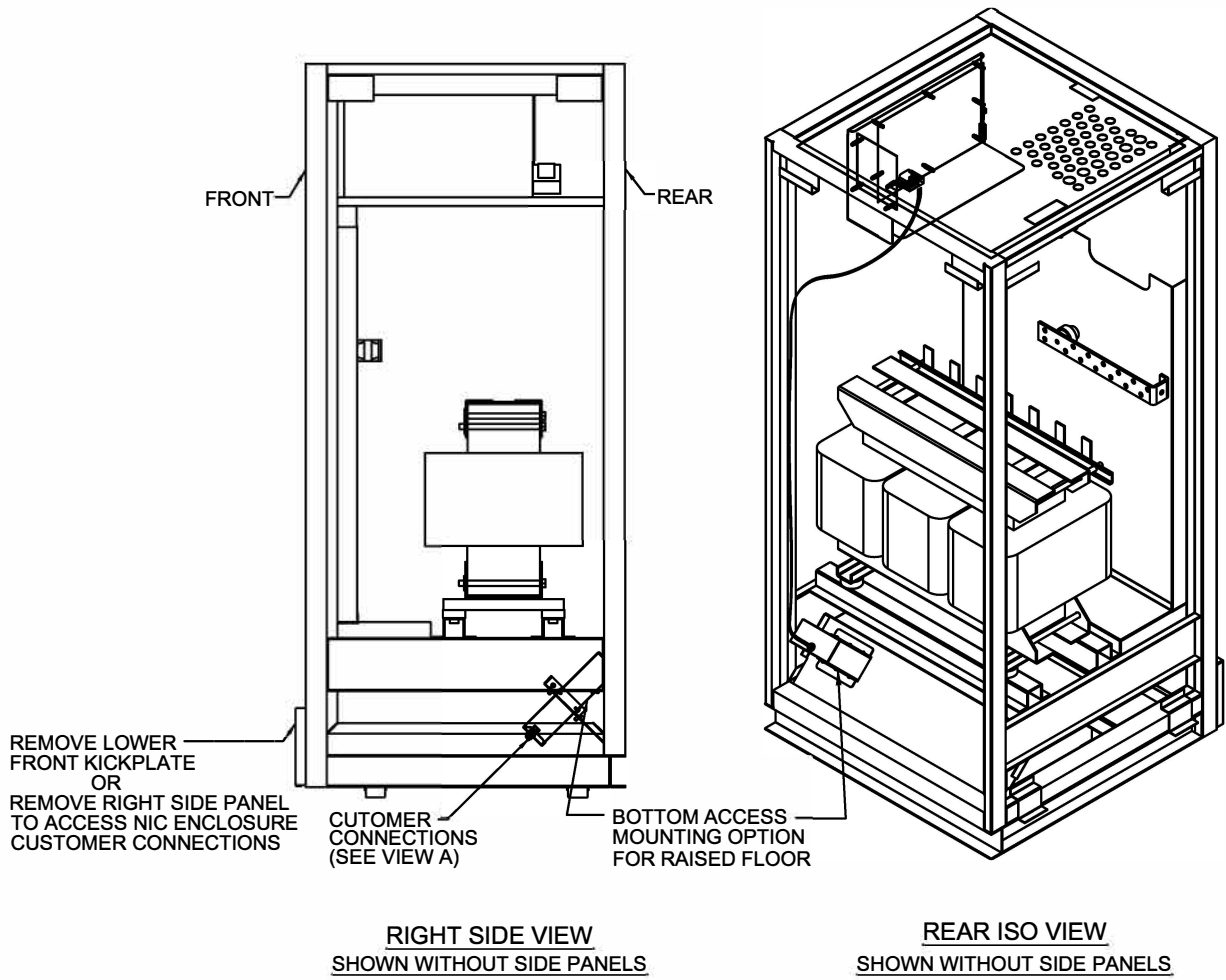
SQD I-LINE PANELBOARD CIRCUIT BREAKER							
KVA	VENDOR	TYPE	FRAME AMPS	TRIPS AMPS	MODEL NUMBER	INTERUPPTING RATING AIC	
						208 - 240 V	400 - 480V
300-430	SQUARE D	PLUG-IN	150A	100A	HGA36100	65kA	35kA
300-430	SQUARE D	PLUG-IN	150A	125A	HGA36125	65kA	35kA
300-430	SQUARE D	PLUG-IN	150A	150A	HGA36150	65kA	35kA
300-430	SQUARE D	PLUG-IN	250A	175A	JGA36175	65kA	35kA
300-430	SQUARE D	PLUG-IN	250A	200A	JGA36200	65kA	35kA
300-430	SQUARE D	PLUG-IN	250A	225A	JGA36225	65kA	35kA
300-430	SQUARE D	PLUG-IN	250A	250A	JGA36250	65kA	35kA
300-430	SQUARE D	PLUG-IN	400A	300A	LA36300	42kA	30kA
300-430	SQUARE D	PLUG-IN	400A	350A	LA36350	42kA	30kA
300-430	SQUARE D	PLUG-IN	400A	400A	LA36400	42kA	30kA
800	SQUARE D	PLUG-IN	150A	100A	HGA36100	65kA	35kA
800	SQUARE D	PLUG-IN	150A	125A	HGA36125	65kA	35kA
800	SQUARE D	PLUG-IN	150A	150A	HGA36150	65kA	35kA
800	SQUARE D	PLUG-IN	250A	175A	JGA36175	65kA	35kA
800	SQUARE D	PLUG-IN	250A	200A	JGA36200	65kA	35kA
800	SQUARE D	PLUG-IN	250A	225A	JGA36225	65kA	35kA
800	SQUARE D	PLUG-IN	250A	250A	JGA36250	65kA	35kA
800	SQUARE D	PLUG-IN	400A	300A	LH36300	65kA	35kA
800	SQUARE D	PLUG-IN	400A	350A	LH36350	65kA	35kA
800	SQUARE D	PLUG-IN	400A	400A	LH36400	65kA	35kA

DRAWN BY	SHEET NO.	STANDARD CIRCUIT BREAKER SCHEDULE 300 - 800KVA LIEBERT PPC	DWG. NO.		DATE	REV. #	1050 DEARBORN DRIVE P.O. BOX 29186 COLUMBUS, OHIO 43229	
CHK BY	ECN NO.							
REF. DWG.	ORDER NO.							

FILE NAME:

NOTES:

1. WIRE SIZE AND TYPE: 10 BASE-T ETHERNET CABLE WITH RJ-45 PLUG CONNECTOR. THE LENGTH IS LIMITED BY ETHERNET STANDARDS.
2. MAXIMUM CABLE LENGTH 4000 FEET (1200 METERS) WITH SHIELDED TWISTED PAIR CABLE #22 AWG MINIMUM, RS-485 COMPLIANT.
3. REFER TO NIC INSTALLATION, OPERATION AND MAINTENANCE MANUAL FOR CONFIGURING THE NETWORK INTERFACE CARD (NIC).
4. ALL CONTROL WIRING (BY OTHERS) MUST BE RUN SEPARATE FROM POWER WIRING. CONTROL WIRING RUNS SHOULD NOT BE COMBINED IN THE SAME CONDUIT.
5. ALL WIRING MUST BE IN ACCORDANCE WITH NATIONAL AND LOCAL ELECTRICAL CODES.



DRAWN BY	CONTROL WIRING BOTTOM MOUNTED NETWORK INTERFACE CARD (NIC) OPTION FOR PRECISION POWER CENTER	DWG. NO.		 1050 DEARBORN DRIVE, COLUMBUS, OHIO 43229	
CHK BY		REV. NO.	DATE		
REF. DWG.					