

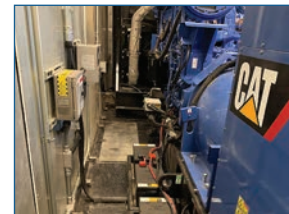
Caterpillar Generators for Inglewood California

(2) 2500 kW Standby Generators with Diesel-Particulate Filter to Meet EPA Air Quality



Caterpillar 2500 kW Diesel Generators at SoFi Stadium Inglewood, CA

- ◆ Sofi Stadium
- ◆ Inglewood, CA
- ◆ (2) 2500 kW Cat Gensets
- ◆ Diesel Particulate Filter
- ◆ UL-142 Subbase Fuel Tank
- ◆ Tier 2 Final



FORZA TELECOM

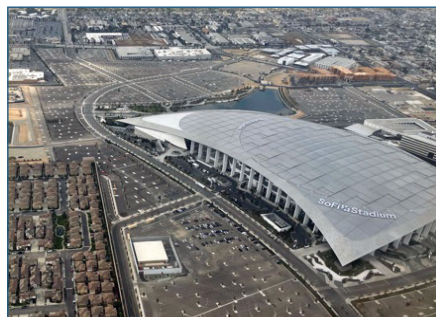
In November of 2016 construction broke ground on the SOFI Stadium in Inglewood, California. With a budget nearing \$5 billion, this would be the most expensive sports venue ever built to date. The stadium designs included all the bells and whistles that are expected in a modern sports facility, including advanced technological features and massive bandwidth for internet connectivity.

In an effort to offer future patrons the best possible wifi connectivity to their cellular devices, the stadium was designed to include a wifi and cellular distributed antenna system (DAS), which was provided by Forza Telecom. This powerful system is highly energy intensive, and required an independent

“Good price was key. Good customer service made the deal even sweeter.”

Michael Kim , Senior Construction Manager

emergency backup power system to ensure power continuity. That the system required a backup power system that was independent from the stadium’s backup power system presented several challenges for the engineering and construction teams, but a reliable solution was ultimately found.



SoFi Stadium Inglewood, CA

Senior Construction Manager at SoFi, Michael Kim, was tasked with sourcing the backup diesel generators that would power this project. Michael found Global Power Supply (GPS) by searching google for generators in the 2.5 MW range and came across GPS’s in-stock Caterpillar 2500 kW diesel generators. The fact that the generators were of the highest quality and in-stock made them a perfect fit for the project’s demanding specifications

and tight deadlines, and because they were pre-owned, significant savings were realized when compared to purchasing new equipment. Some additional customizations of the generators were required, and included the installation of diesel particulate filters (DPF), which were added to make the units compliant with EPA and South Coast Air Quality Management District (SCAQMD) regulations. When the purchase and installation details were complete, savings would total over \$1 million compared to the purchase of new units.

The installation of the generators was a challenging project from a logistical perspective, and one that GPS was proud to be part of. On any given day there were 3,000 to 4,000 people working at the site, which required both precision and expertise to navigate. Additionally, with generators this size, special permits were required from the SCAQMD, which can be tedious and time consuming, but GPS connected Forza with a reliable engineering firm to assist with obtaining the proper permits. The GPS project management team worked closely with site coordinators to oversee the installation, and after an April, 2020 delivery date, startup of the generators was successfully completed in September of the same year.