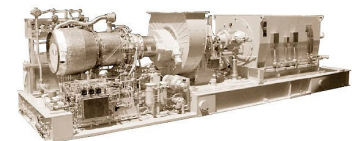
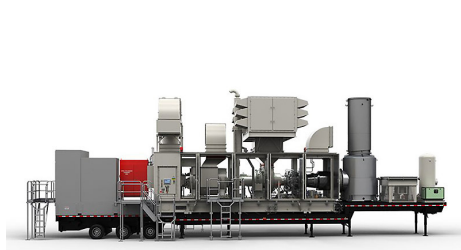


We have the following turbines available for immediate sale or rent. Industrial gas turbines offer great reliability and sustained high power output for use in electric power generation, gas compression, pumping systems, production and pipeline applications, mechanical-drive packages, and generator sets. Gas turbines can operate on a wide variety of fuels, including natural gas, distillates, NGL, LNG, coal-seam methane, hydrogen, and renewable fuels, such as landfill and sewage gases.

Turbines

Manufacturer	Model	Output	Fuel	Notes
(10) Solar	Saturn	1000kW	Nat Gas	Rebuilt Zero Hours
* (2) Solar	Centaur 40	2.5MW	Nat Gas	4160V/60Hz
(5) Solar	Taurus T-60 Mobile	5.2MW	Dual Fuel	Rebuilt
Solar	Taurus T-60 Skid	5.2 MW	Nat Gas	12470/13800 V
* Solar	Taurus T-60 Mobile	5.2 MW	Dual Fuel	Used, Low Hours
Solar	Mars 100	10.685 MW	Nat Gas	New Surplus, So-Lo-NOx
* (3) Solar	Titan 130	15 MW	Nat Gas	New
* GE	TM2500	35MW	Nat Gas	Rental Only
GE	Frame 6B	36MW	Nat Gas	Used
GE	7FA	170 MW	Dual Fuel	Surplus New, Qty. (2)
GE	LM2500PE	20.5 MW	Nat Gas	Used 13.8KV
GE	LM5000	35 MW	Nat Gas	13.8KV, Qty. (3)
GE	LM6000 PC & PD	48 MW	Dual Fuel	Surplus New
Mitsubishi	M501F	160 MW	Nat Gas	Surplus New, Qty. (3)
Pratt & Whitney	FT4C-1 Twin Pack	49.9 MW	Nat Gas/Fuel Oil	1000 hours after overhaul in 2000
Pratt & Whitney	FT4C-3F Power Pack	22.4 MW	Nat Gas	0 hours after GE overhaul in 2000
Siemens	501FD2	186.5 MW	Nat Gas	Surplus New
(6) Lycoming	TPG-1000	1000 kW	Nat Gas	New

* Rental Turbines Available



Mike Wolfe

(800) 706-0906 ext. 306
mike.wolfe@globalpwr.com

www.globalpwr.com

©2016 Global Power Supply, Inc. All Rights Reserved
Specifications are subject to change.