



**GLOBAL
POWER**
SUPPLY



POWER WHEN YOU NEED IT

A row of white shipping containers is arranged in a line on a concrete foundation in a grassy field. The sky is bright blue with light clouds. The text "RENEWABLE POWER WHEN YOU NEED IT" is overlaid in the center of the image.

RENEWABLE POWER WHEN YOU NEED IT



WHY GLOBAL POWER SUPPLY

Turnkey Plus

PM & Logistics

Multiple Brands

Large In-
Stock
Inventory

New, Surplus
& Refurbished
Equipment

No Location
Boundaries

Support MSA

Trade-Ins

Financing





WHAT YOU CAN EXPECT FROM GLOBAL POWER SUPPLY

Our business practices:

Our team is honest and will always conduct business with integrity and straightforward communications.

Our goal is long term partnerships driven by customer focused recommendations.

We will be environmentally conscious and comply with all laws.

We know our limitations and will not perform work beyond our capabilities.

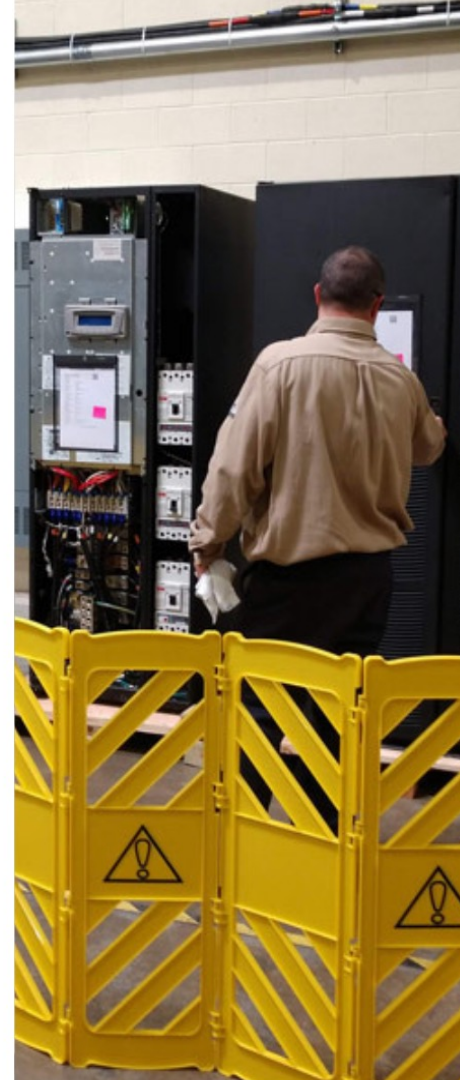
GPS will carefully maintain customer confidentiality.



BUY WITH CONFIDENCE

34-point inspection process designed specifically to ensure that the products we sell work properly when our customers need them.

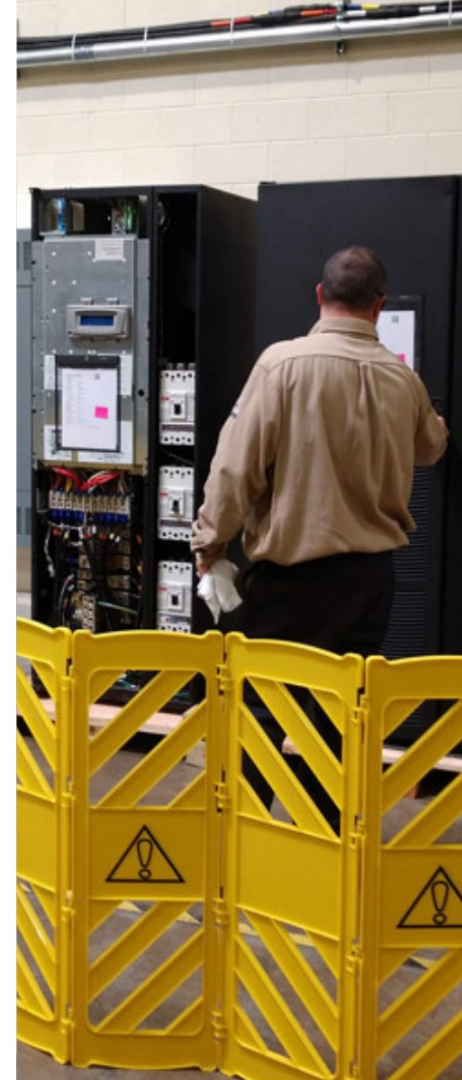
1. Check condition of all belts.
2. Check condition of all hoses, clamps and fittings for tightness.
3. Check for oil, coolant and fuel leaks.
4. Check radiator.
5. Check coolant level and condition.
6. Check jacket water heater.
7. Check fuel level and fuel supply system.
8. Check fuel tank for contamination.
9. Check level/condition of oil.
10. Check oil, fuel and coolant filter.
11. Check air filter assembly, air filter, and duct.
12. Check exhaust system components, especially the rain cap.
13. Check engine mounts and other fasteners, brackets, etc.
14. Check all external linkages for wear and freedom of movement.
15. Check breaker function serviceability of terminal lugs.





BUY WITH CONFIDENCE

16. Check the battery charging alternator, if applicable.
17. Check the starter system.
18. Check battery connections and cables.
19. Check battery charger/s.
20. Check ignition wiring and connections.
21. Check spark plugs, if applicable.
22. Check AC generator.
23. Check condition of wiring harness.
24. Check output voltage and frequency.
25. Check all meters.
26. Check all fault lights and panel lights.
27. Check all safeties.
28. Check temperature during operation.
29. Check for oil, coolant and fuel leaks
30. during operation.
31. Check shut down system.
32. Inspect trailer, including tires, brakes,
33. lighting, and hitch.
34. Operate unit under 100% Load.





OUR CUSTOMERS

- ALCA Electric
- Apple
- Aquafauna Bio-Marine, Inc.
- Ascendant MDx Inc
- AT&T
- Barthelson Green Enterprises
- Bergelectric Corp.
- Bok Financial
- Brennan Electric, Inc.
- CB Richard Ellis
- CH Reynolds Electric, Inc
- City of Rio Honda
- Corelink Data Centers, LLC
- Cupertino Electric
- DK Nasland
- Dynalectric An EMCOR Company
- Ehvert Mission Critical
- Encon Group
- Enterasys Secure Networks
- Equisales
- Foster Farms
- Hewlett Packard Company
- Hitex Drilling
- Hosting.com
- JNET Company
- Jones Lang LaSalle
- Kentz Engineers & Constructors
- Kinder Morgan
- Kohanaiki Shores LLC
- L-3 Communications MariPro, Inc
- La Cumbre Mutual Water Coa
- NetRiver International LLC
- Northwestern Mutual Financial
- Oneok Rockies Midstream
- OSG Billing Services
- Plains All American
- Praxair
- Q9 Networks, Inc
- Quality Technology Services
- Republic Services, LTD
- Smithsonian Institute
- Southwest Airlines Co.
- SRA International
- SunGard
- Synnex Corporation
- SYSCOM Technologies
- Sysmex Reagents America
- Technical & Engineering Sol.
- TW Telecom Inc
- West Corp. / Alorica
- Xerox Business Services LLC



MULTI-VENDOR SOLUTIONS

EQUIPMENT, SOLUTIONS, SERVICE & RAPID DELIVERY

- Diesel Generators
- Natural Gas Generators
- Automatic Transfer Switches
- UPS Systems
- Custom Enclosures
- Switchgear
- Transformers





UPS POWER SOLUTIONS

EQUIPMENT, SOLUTIONS, SERVICE & RAPID DELIVERY

After devastating wildfires caused by downed power lines across the state of California, energy provider PG&E rolled out a new program aimed at reducing the potential for further wildfire instances. The new program, called Public Safety Power Shutoff (PSPS) works by shutting off power to certain regions of the state during extreme high wind events.

GPS was able to provide first round of pricing and quotations within 10 days of the request. From there, additional engineering conversations fine-tuned the specifics on the switchgear, emissions control kits, and enclosure designs. After six weeks of collaborative meetings, design, engineering, and detailed quoting, GPS was awarded the project by Betancourt.

CALTRANS STUDY
Caltrans California

Challenge
Implement a backup power solution for the Caldecott high-traffic tunnel in Oakland, CA as quickly as possible to combat expected PSPS power outages.

Solution
Global Power Supply provided an engineered solution including in-stock 2500 kW generators, switchgear, emissions control kits, and customized site-specific enclosures.

After devastating wildfires caused by downed power lines across the state of California, energy provider PG&E rolled out a new program aimed at reducing the potential for further wildfire instances. The new program, called Public Safety Power Shutoff (PSPS) works by shutting off power to certain regions of the state during extreme high wind events. The PSPS program has had a huge impact on the need for backup power for all types of industries throughout the state, and one of the most critical is transportation infrastructure. Loss of power to high-traffic tunnels, which rely on the grid to power their ventilation and lighting, could have a devastating impact on traffic, business, and safety for all those who pass through or near tunnels in their commute. In order to ensure the safety of daily commuters it has been vital for tunnel operators to implement backup power solutions as quickly as possible. In April of 2020, Betancourt Bros Construction reached out to GPS

MTU Generators for Oakland California
[2] 2500 kW Standby Generators in Custom Enclosures, Paralleling Switchgear, and UPS

through our website to inquire about some of our in-stock 2500 kW backup diesel generators. Betancourt Bros was looking for a solution for his customer, Caltrans, in their pursuit of a backup power solution for the Caldecott Tunnel in Oakland, CA. One of GPS's backup power experts, Jame Turcios, responded right away and they immediately began discussing GPS's history in dealing with installation projects of this scope. Further preliminary discussions followed with Dave Betancourt (President Betancourt Bros Construction) addressing the BOM, pricing, design, and delivery schedule. GPS was then brought into discussions with all of the parties including Caltrans, MTU, ASCO, and Johnson Thermal.

GPS was able to provide first round of pricing and quotations within 10 days from when Greg first approached GPS. From there, additional engineering conversations fine-tuned the specifics on the switchgear, emissions control kits, and enclosure designs. After six weeks of collaborative meetings, design, engineering, and detailed quoting, GPS was awarded the project by Betancourt.

The combination of the scope of this project, California permitting,

along with the location caused some significant logistical challenges. The generators would be placed on a bridge on one end of the Caldecott Tunnel, providing limited space to accommodate such large equipment. Even after initial production was approved, design changes to enclosures were needed to meet the complex installation challenges.

"GPS's expertise and commitment to detail were vital to the success of this project."

Dave Betancourt
President Betancourt Bros Construction

Delivery of Generators to Caldecott

GLOBAL POWER SUPPLY

©2020 Global Power Supply, Inc. All Rights Reserved.
Global Power Supply, Inc. 10000 S. 10th Street, Suite 100, Phoenix, AZ 85042
1-800-850-8500



NEVADA UPS TEST CENTER & WAREHOUSE

Global Power Supply has expanded their UPS Systems division by moving to a new facility in Carson City, Nevada with triple the square footage, four docking bays, and a custom-designed UPS system test laboratory.

Our new world class UPS testing lab allows us to test, repair and refurbish multiple UPS units simultaneously. There are no limits in terms of size, voltage, standalone units versus parallel systems and load banking capabilities. This gives us the ability to ensure every product leaving our facility has a clean bill of health and will remain reliable to our customers for years to come.





TURNKEY PLUS NATIONWIDE RETAIL





GLOBAL POWER SUPPLY TURNKEY PLUS

Site Survey

Complete
Quote

Provide ATS,
Conduit

On-Site
Construction

Delivery,
Offload, Install

Fueling

Startup

Preventative
Maintenance

Remote
Monitoring

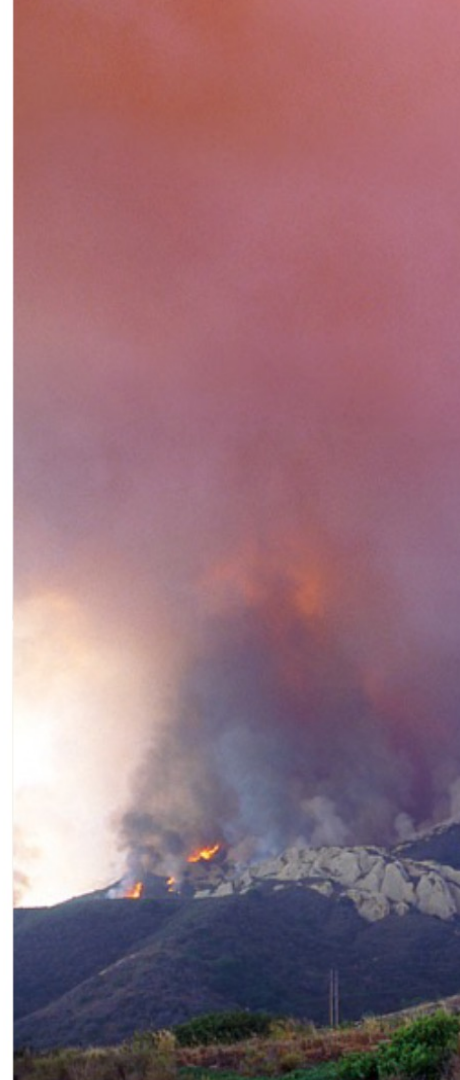




DIESEL GENERATORS IN EMERGENCY PREPAREDNESS

EQUIPMENT, SOLUTIONS, SERVICE & RAPID DELIVERY

- You may not know what you need
- Each facility has unique requirements
- Leverage existing assets
- Project management by GPS
- Lead times in disaster scenarios
- Trust equals peace of mind
- Location, location, location





EMISSIONS SOLUTIONS

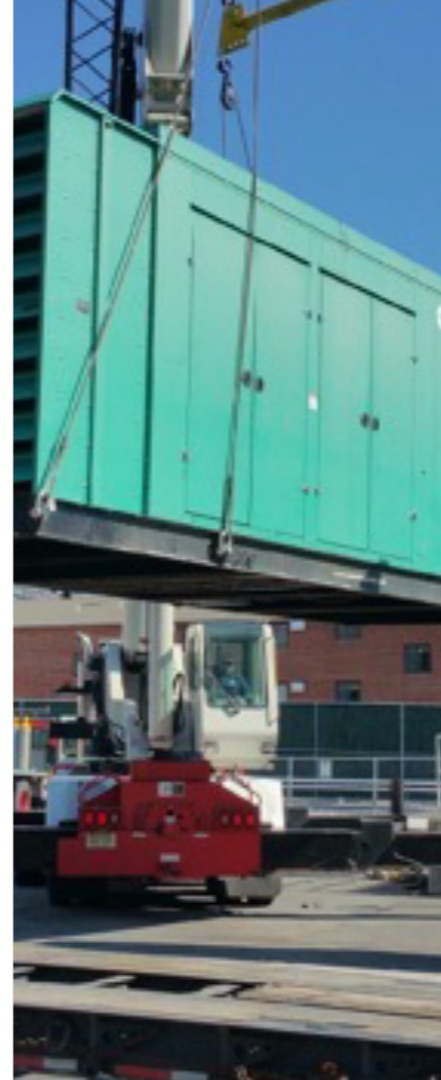
- SCR Solutions for Gas & Diesel
- Tier 4i Rated Engines
- 3 Way Catalytic Converters
- Diesel Particulate Filters



ASSET RECOVERY

The primary goal of Global Power Supply's asset recovery program is to capture additional value for our client and create new budget dollars that can help fund new projects or reduce capital requirements.

- Asset Buy Backs
- Equipment Trade-Ins
- Upgrades
- Consignments
- Cash Offers
- Customized Solutions





RECOVER THE TRUE VALUE OF YOUR CRITICAL FACILITY ASSETS

Our precision process efficiently removes your old or surplus equipment. Whether it is an old UPS system or an entire data center, we ensure a timely, safe and compliant execution from pre-planning, permitting, staging, close-out and certification.

- Asset Buy Backs
- Equipment Trade-Ins
- Upgrades
- Consignments
- Cash Offers
- Customized Solutions

WE CAPTURE VALUE WHERE OTHERS CAN'T



MULTI-VENDOR SOLUTIONS

EQUIPMENT, SOLUTIONS, SERVICE & RAPID DELIVERY

- New, Used and Refurbished
- Rapid Deployment for Fast Track Projects
- Industry Leading Warranties on Used/Surplus Equipment





IN-STOCK UPS SYSTEMS

EQUIPMENT, SOLUTIONS, SERVICE & RAPID DELIVERY



- New, Used and Refurbished
- Rapid Deployment for Fast Track Projects
- Industry Leading Warranties on Used/Surplus Equipment





CATERPILLAR 2500KW 3516C

480V TIER 2 STANDBY DIESEL GENERATOR

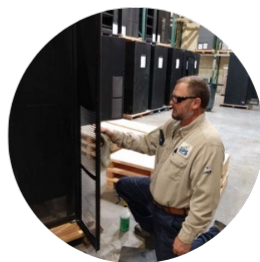
- Caterpillar 3516C Diesel Engine
- 2500 kW Standby Power Rating
- 480/277V
- Low Hours
- EPA Certified for Stationary Emergency Use
- Tier 2 Emissions Levels
- Weatherproof Insulated Enclosure





NATIONWIDE SERVICES

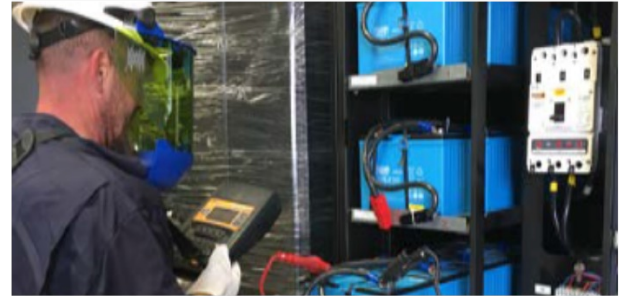
- Design & Engineering
- Start-up & Commissioning
- Facility Decommissioning
- Appraisals & Trade-ins
- Project Management & Logistics
- Financial Services & Leasing
- Full Service Rentals





NATIONAL PM PROGRAM

- Direct factory and GPS oversight of scheduled maintenance of generators and UPS.
- Single phone number for all schedule and emergency service calls. Calls to individual distribution branches no longer necessary.
- Guaranteed availability of common spare parts in each critical facility.
- Standardization of preventative maintenance scope across all facilities to maintain highest possible degree of generator reliability.
- Centralized billing.

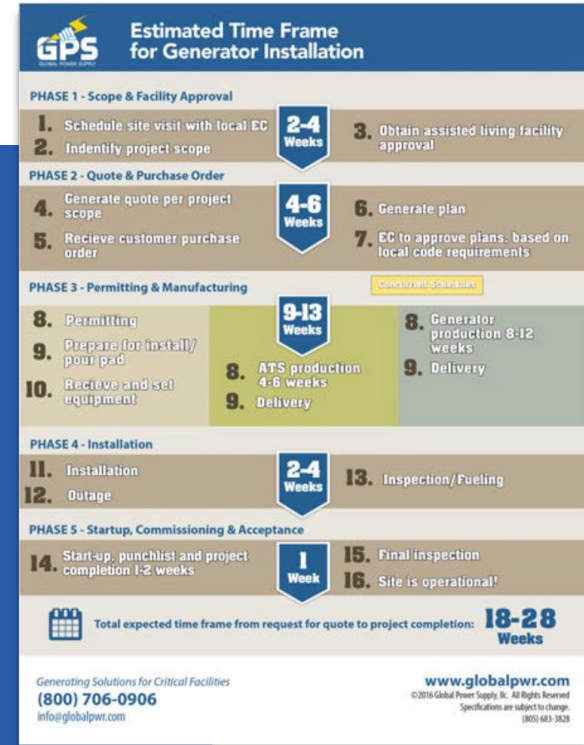




IMPORTANCE OF TRANSPARENCY

Building credibility and trust through transparency from the beginning eliminates conflict between all parties.

We'll advise you in establishing contingencies and we'll utilize place holders for items that may or may not be required. Experience is an advantage, but the work is ever-changing, and transparency is key in getting your project accomplished successfully, on time and on budget.





WHAT OUR CUSTOMERS SAY

"Robert and his team really helped us out and couldn't ask for anything else! He pointed us in the right direction for financing and made the whole scary process very easy and seamless! They even finished it before our expected delivery date!"

- Freight Train Canna

"Good price was key. Good customer service made the deal even sweeter."

- Senior Construction Manager for SoFi Stadium

"The support of Global Power Supply's expert team made the installation and commissioning of the new back-up generators seamless and easy."

- Spirit Rock

CASE STUDY

Freight Train Canna Michigan



Challenge
Find in-stock emergency backup power equipment despite global supply chain constraints.

Solution
Global Power Supply was able to provide a backup power solution including in-stock diesel generator and automatic transfer switch (ATS).

Cannabis cultivation requires the most energy of any agricultural crop in the United States. Different growth methods require different energy uses, but according to the Northwest Power and Conservation Council, indoor commercial cannabis production can use 2,000-3,000 kilowatt hours of energy for every pound of product. This power plays a crucial role in the overall development and growth of a successful business.

Freight Train Canna is a new and ambitious team located in the great state of Michigan. The premium cannabis and solventless processing lab prides themselves on growing the purest strains with the finest terpenes.

Their team is comprised of people who have been in the industry for over ten years, and they began their journey together in January 2021.

As a budding business, their first mission was to secure a consistent source of power in order to complete construction and ensure successful harvests in the future.

In the midst of the lingering pandemic, they faced obstacles of all kinds. In searching for a backup power solution, they were given 60-week lead times by manufacturers, and supply chain challenges prevented them from moving forward for months.

Michigan is known for regular power outages, and the need for a backup power solution grew urgent, as they could not afford to wait the typical lead time.

The severe supply chain crisis continued to be a detriment to companies worldwide. In order to combat the extended delays for backup power equipment, Global Power Supply (GPS) broadened manufacturer relationships, and proactively placed high-volume orders from multiple manufacturers to maintain a steady flow of new inventory.

Purchasing and installing a generator in any kind of facility can be a complex and time-consuming task, however, Freight Train Canna finally found a solution with Global Power Supply!

GPS's team of experts have a long history of working with customers to successfully complete these types of projects while providing a shorter than normal lead time.

GPS worked closely with Freight Train Canna to deliver a 600amp Automatic Transfer Switch (ATS), and a HiPower 400kW Diesel back-up generator immediately upon request.

Bidding Business Powered by 600amp ATS and 400kW Diesel Generator

Without the ATS, they were not able to run utility power to their building to continue construction. GPS's urgency opened the door for construction to progress and for Freight Train Canna to successfully move forward with their business.

"Robert and his team really helped us out and couldn't ask for anything else! He pointed us in the right direction for financing and made the whole scary process very easy and seamless! They even finished it before our expected delivery date!"

DJ
Freight Train Canna



HiPower 400kW Diesel Generator

GLOBAL POWER SUPPLY

©2022 Global Power Supply, Inc. All Rights Reserved.



HOW WE WORK

- Relationship Driven
- End User Focus
- Product Qualification
- Bid Spec Adverse
- Stocking Supplier
- Nationwide Turnkey Installation/Decom
- Cooperation w/Distributors
- Marketing Partnerships
- Trade-In Programs
- In-Stock Equipment Options
- Startup & PM Services





THANK YOU

- Turnkey Plus
- Leasing – Self-Funded & Third Party
- High Quality PM & Logistics – Nimble & Responsive
- Multi-Brand – Power of Choice
- Size & Selection of Inventory for Immediate Delivery
- New, Surplus and Refurbished Equipment
- No Location Boundaries – We are “Global”
- UPS & Power Distribution
- Ability to Negotiate, Sign & Comply with any MSA
- Trade-Ins & Asset Recovery
- Modular Critical Infrastructure Solutions