

MTU 2250 kW 2250SXC6DT2

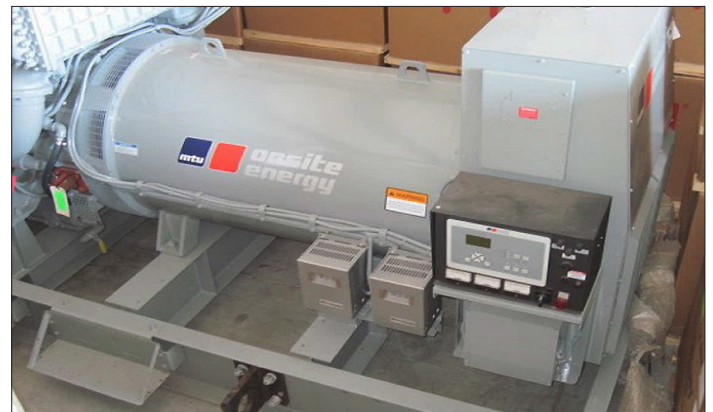
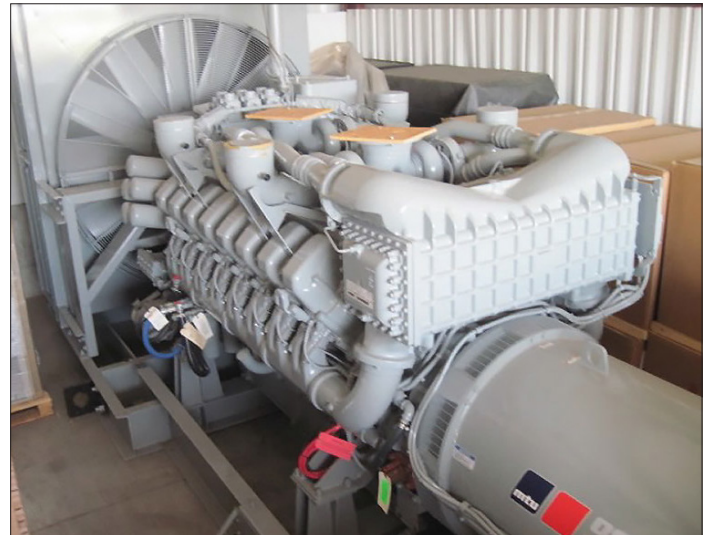
Diesel / 4160V / 3 Phase / 60Hz

www.globalpwr.com

Generator Features

New Surplus 2007 MTU 2250 kW 2250SXC6DT2 Standby Diesel Generator. This surplus new unit has been inspected and serviced, and is ready for rapid deployment.

- MTU 2250 kW 2250SXC6DT2 Standby Diesel Generator
- MTU 16V-4000-DETROIT Diesel Engine
- New Surplus from 2007
- Inspected and Serviced
- Marathon Alternator
- 1800 RPM
- 4160V / 60Hz / 3 Phase
- 2250 kW Standby Rating
- Serial Number: 302839-1-1-0309
- Model Number: 2250SXC6DT2
- Sku# 5362



SPECIFICATIONS	
Model Number	2250SXC6DT2
Standby Rating	2250 kW
Year Manufactured	2007
Hours	0

Empowering You

We are a full service provider of new and used integrated power systems including diesel generators, natural gas generators, genset enclosures, fuel tanks, automatic transfer switches (ATS), HVAC/CRAC equipment and paralleling switchgear.

FOR MORE INFORMATION:

(800) 706-0906
info@globalpwr.com



©2016 Global Power Supply, Inc. All Rights Reserved
Specifications are subject to change.
20160927