

# XTREME POWER CONVERSION X90-2S

2 Slot Modular Online UPS // 480VAC 3W Three-Phase 50kW-140kW



## Scalable, Modular, Compact 480V UPS

The X90-2S is a scalable modular online double conversion UPS that protects critical data and equipment from power problems while supplying clean and reliable network grade power.

The fully integrated X90-2S UPS includes maintenance bypass and batteries (up to 100kW) in single cabinet providing the most compact footprint and simplifying installation.

For 208/120VAC 3 phase UPS, reference the M90-80 [www.xpcc.com/m90-80](http://www.xpcc.com/m90-80) & M90-140 [www.xpcc.com/m90-140](http://www.xpcc.com/m90-140)

### PRODUCT SNAPSHOT

- › Capacities: 50kW, 70kW, 100kW, 140kW
- › 65kAIC rating
- › Hot swappable power and battery modules
- › UL-1778 , cUL, FCC A, RoHS, TAA, Energy Star
- › 2 year warranty (USA and Canada)

### FEATURES

**Highest availability—** system can be configured with redundant power and battery modules

**Reduce energy cost—** online efficiency up to 96.5% and ECO mode up to 99%

**Power module ratings—** 50kW or 70kW modules available

**Internal Batteries—** internal batteries provide up to 6 minutes at 100kW load

**Full front access—** no rear clearance required for maintenance

**Maintenance bypass—** integral front bypass enables maintenance and repair

**Large Touchscreen LCD display—** 10" display provides graphic display including status and alarms

**Dual or single utility input—** provides maximum installation flexibility

**Cable Access —** top cable access is standard. Optional 6" side car kit is available for bottom entry

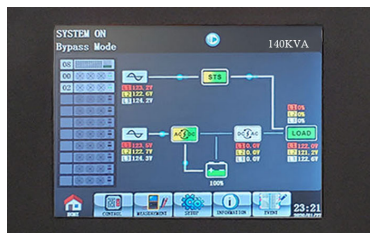
# MODEL SELECTION GUIDE

MODEL NUMBER		X90-2S50k	X90-2S70k	X90-2S100k	X90-2S140k
CAPACITY	Power rating	50kVA/50kW	70kVA/70kW	100kVA/100kW	140kVA/140kW
CABINET CAPACITY	X90-2S UPS: power modules	Up to 140kW (2 x 70kW) or up to 100kVA (2 x 50kW)			
	X90-2S UPS: battery modules	4, 8, 12, 16 or 20 battery modules			
	X90-BC: battery modules	Up to 36 additional battery modules			
INPUT	Voltage/frequency nominal	480VAC (3W), 50/60Hz auto-sensing			
	Voltage/frequency range	480VAC or +20/-20% VAC three-phase, 40-70Hz			
OUTPUT	Voltage/frequency range	480VAC (3W), 50/60Hz auto-sensing			
	Efficiency	Up to 96.5% online mode or 99% ECO mode			
	Overload capacity	105%-110% for 60min; 110%-125% for 10min; 126%-150% for 1min; >150% for 200ms			
BATTERY SYSTEM	Nominal voltage	+/-240VDC			
	Charge Current (programable)	18A	18A	36A	36A
DIMENSIONS & WEIGHTS	UPS & battery cabinet (W x D x H)	23.6 x 42 x 79 in / 357 lbs (UPS) / 23.6 x 42 x 79 in 878 lbs (BC)			
	Power & battery module (W x D x H)	4.2 x 28 x 6 in / 104 lbs (PM) 17.2 x 29.5 x 5.25 in / 70 lbs (BM)			
ENVIRONMENT	Temperature	0-40°C (32-104°F)			
	Altitude	5,200 ft above sea level			
	Audible noise (typical)	< 69dBA at 1m			
APPROVALS		UL-1778, cUL, FCC A, RoHS, TAA, Energy Star			
WARRANTY		2 years (USA and Canada)			
COMMUNICATIONS INTERFACE		RS-232, EPO, Relays, Intelligent slot for optional cards (Web/SNMP, Modbus)			
INCLUDED IN BOX		User manual, RS-232 cable, unloading ramp, ViewPower Software			
AVAILABLE OPTIONS		External maintenance bypass, battery temperature sensor, side car kit for bottom cable access (increases width by 6")			

## BATTERY RUNTIMES

	X90-2S UPS				X90-2S UPS + X90-BC								
Battery Modules	8	12	16	20	24	28	32	36	40	44	48	52	56
30kW	9	15	21	27	34	41	48	56	63	71	79	87	95
50kW	-	7	11	15	18	22	26	30	34	38	43	47	52
70kW	-	-	7	10	12	15	17	20	23	26	28	31	35
80kW	-	-	6	8	10	13	15	17	19	22	24	27	29
100kW	-	-	-	6	7	9	11	13	15	17	18	20	22
140kW	-	-	-	-	-	6	7	8	10	11	12	14	15

Runtimes are shown in minutes and will vary based on battery age and site conditions.



Touch LCD Display

**65kAIC Breakers**  
Input, output & maintenance bypass

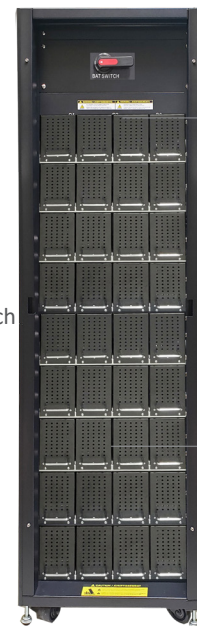
**Battery Module**  
includes 10 pieces of  
12V 580W batteries



X90-2S 100kW UPS  
(door removed)

**Battery Switch**

**Power Module**  
50kW or 70kW each



**Battery Breaker**

**Battery Enclosure**  
Includes slots  
for up 36 battery  
modules

X90-BC Battery  
Cabinet